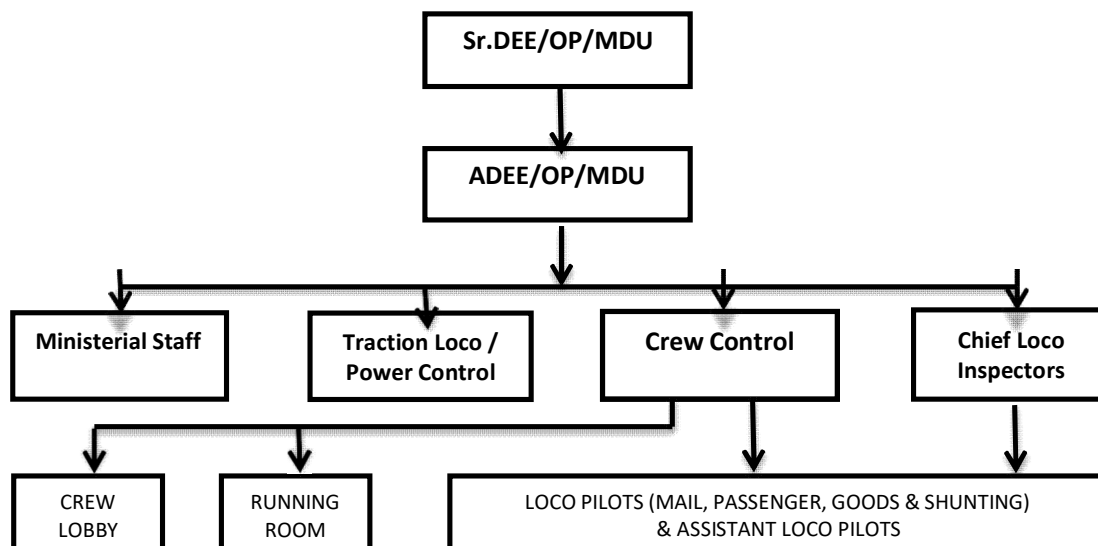


ELECTRICAL OPERATION BRANCH – MADURAI DIVISION

FUNCTIONS

- Management of locomotives' link & crews' links
- Human resources development & management for its optimum utilization
- Arrange Rest facilities for out-station off-duty crews

ORGANIZATIONAL CHART



ESTABLISHMENTS & THEIR FUNCTIONS

➤ ADMINISTRATIVE OFFICE

Situated at DRM/MDU office complex, near to second entry of Madurai Railway Station. Administrative office is set up for the overall management of Electrical Operation Branch. Senior Divisional Electrical Engineer (Sr.DEE/OP/MDU) is the Head of the Branch, who is assisted by one Assistant Divisional Electrical Engineer (ADEE/OP/MDU).

Three sections (viz. Technical, Drawing, and Ministerial) supervised by separate Supervisory Officials handle the day to day works of Divisional Office.

- Technical Section is supervised by one Chief Locomotive Inspector/Head Quarter
- Drawing section is supervised by one Junior Engineer/Drawing & Design
- Ministerial section is supervised by three Chief Office Superintendents

➤ **TRACTION LOCO / POWER CONTROL**

Situated at DRM/MDU office complex, near second entry of Madurai Railway Station. Its functions are,

- to effectively monitor the scheduled running of locomotives as per crew link, and to initiate corrective actions by replacing / substituting other locomotives in case of failure happened in crew link.
- to monitor freight crew working hours and to initiate corrective action to bring the working hours of Loco Pilots within the statutory limits.
- to arrange relief locomotives & crew to meet any unanticipated events
- to promptly report any unusual developments to higher ups
- to disseminate messages given by higher ups to the field units

➤ **CREW CONTROL**

Situated at Madurai (MDU), at Tirunelveli (TEN), Milavittan (MVN), and at Sengottai (SCT) Railway Station Platforms. Its functions are

- to book crew for scheduled trains as per approved crew links
- to book crew for unscheduled 7 freight trains as and when the demand for the same is made from Train Traffic Control Office
- to supervise the day to day activities of running Rooms

➤ **RUNNING ROOMS**

Situated near to Dindigul (DG), Madurai (MDU), Karaikkudi (KKDI), Rameswaram (RMM), Tuticorin (TN), Milavittan (MVN), Tiruchendur (TCN), Tirunelveli (TEN), Sengottai (SCT), Punalur (PUU) and Bodinayakkanur (BDNK), Vanchchi Maniyachi (MEJ) Railway Stations. Running Rooms are established to provide,

- Air-conditioned bed space for taking rest,
- hygienic meals at subsidized rate, and
- facility for recreations

for the off-duty out station Running Staff. Besides the nine Running Rooms, Madurai Division has three crew rest room facilities; at Punalur (PUU), Bodinayakkanur (BDNK), and Vanchimaniachi (MEJ).

➤ **CHIEF LOCOMOTIVE INSPECTORS (CLI)**

CLIs are unique type of supervisory officials. These supervisory officials are selected from eligible Loco Running Staff category through selection tests. Despite a group of Loco Pilots are attached to them for receiving various trainings, handling practices etc. from them, CLI doesn't hold the authority to initiate disciplinary actions against any erring Loco Running Staff. However, the report generated by the CLI on the performance of the Loco Running Staff attached to them are valid documents for initiating corrective actions. Their work mainly oriented on 'counseling' the Loco Running Staff

PREVAILING MANPOWER DEPLOYMENT IN ELECTRICAL OPERATION MADURAI BRANCH

- Group A Gazetted Officer(s) : Sr.DEE/OP/MDU
- Group B Gazetted Officer(s) : ADEE/OP/MDU
- Group C Inspectors : 12 (Chief Loco Inspectors)
- Group C Ministerial : 17 (Ch.OS -3, OS -5, Sr. Clerk -5, Jr. Clerk - 3)
- Group C Loco running Staff :

Loco Pilots (Mail)	83
Loco Pilots (Passenger)	85
Loco Pilot (Goods)	48
Loco Pilot (Shunting)	39
Assistant Loco Pilots	204